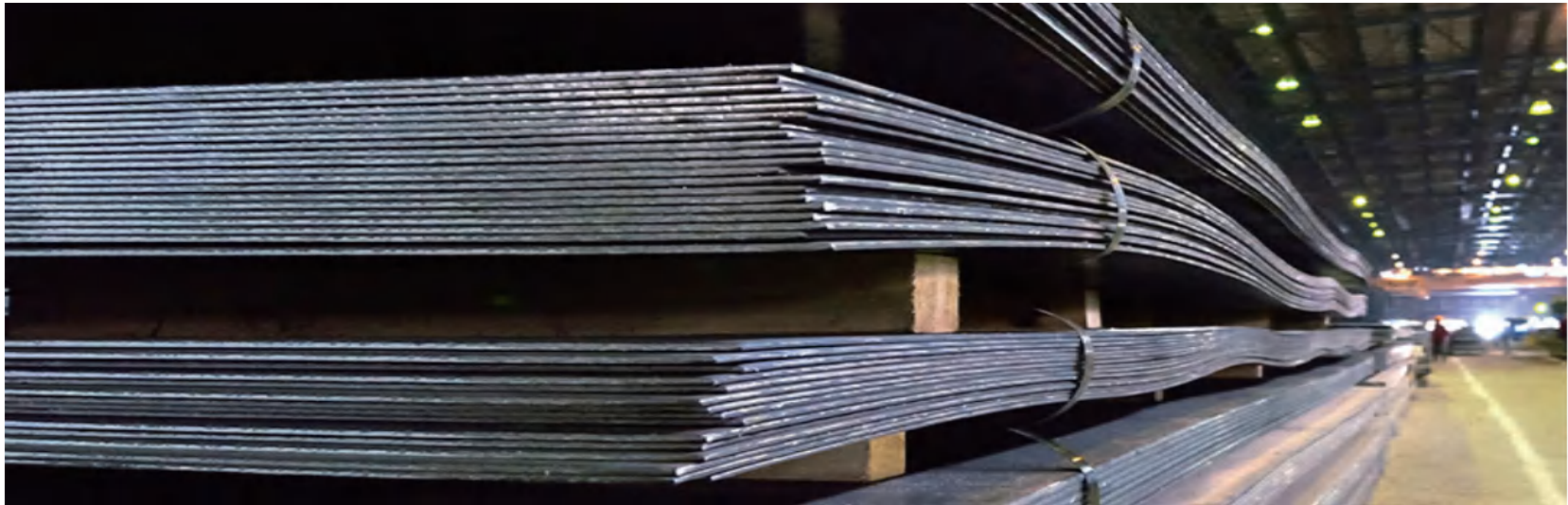


COLD ROLLED CARBON STEEL



INTRODUCE

Carbon steel sheet is an iron carbon alloy with carbon content of 0.0218% ~ 2.11%. Generally, it also contains a small amount of silicon, manganese, sulfur and phosphorus.

ADVANTAGE

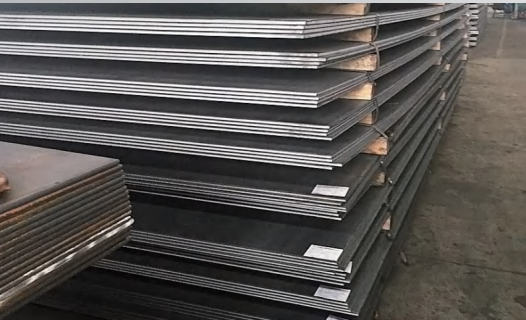
Durable – carbon steel is very strong and shock resistant.Safety - green carbon steel is easy to recycle, making it environment-friendly. Economy - carbon steel pipe is cheaper than copper pipe.

APPLICATION

Mild carbon steel is generally used in oil pipelines. Medium carbon steel fluid transportation and mechanical manufacturing can be involved. High carbon steel is usually applied in machining.

COLD ROLLED CARBON STEEL SHEET

Cold rolled carbon steel sheets are used extensively to make daily necessities such as automobiles,TV sets, air-conditioners, refrigerators and tools. As our lifestyles improve significantly, the daily necessities become more diverse and upmarket.



COLD ROLLED CARBON STEEL STRIP

Cold rolled steel strip is made of hot rolled coil and it is rolled below recrystallization temperature at room temperature, including plate and coil. The steel strip with long length and delivered in coils is called steel strip.



COLD ROLLED CARBON STEEL COIL

Cold rolled coil is made of hot rolled coil and rolled below recrystallization temperature at room temperature, including plate and coil. Many domestic steel mills such as Baosteel, WISCO and Angang can produce them.





INTRODUCE

Hot-rolled plate/coil is made by continuously rolling the slab, after heating the slab in the reheating furnace, by the roughing mill and finishing mill, and it is coiled for a easier transportation.

ADVANTAGE

Hot rolled plate has low hardness, easy processing, good ductility and good plasticity.

APPLICATION

Hot rolled steel is mainly used in the production of steel structures, bridges, ships and vehicles. After heat treatment engineering, it is used for the production of various mechanical parts.

HOT ROLLED CARBON STEEL PLATE

The straight hair coil shall be cut or rewound after finishing line treatment such as head cutting, tail cutting, edge cutting and multi-pass straightening and leveling.



HOT ROLLED CARBON STEEL COIL

Hot rolled coil is a steel plate rolled by roughing and finishing mills after heating with slab as raw material.



HOT ROLLED CARBON STEEL STRIP

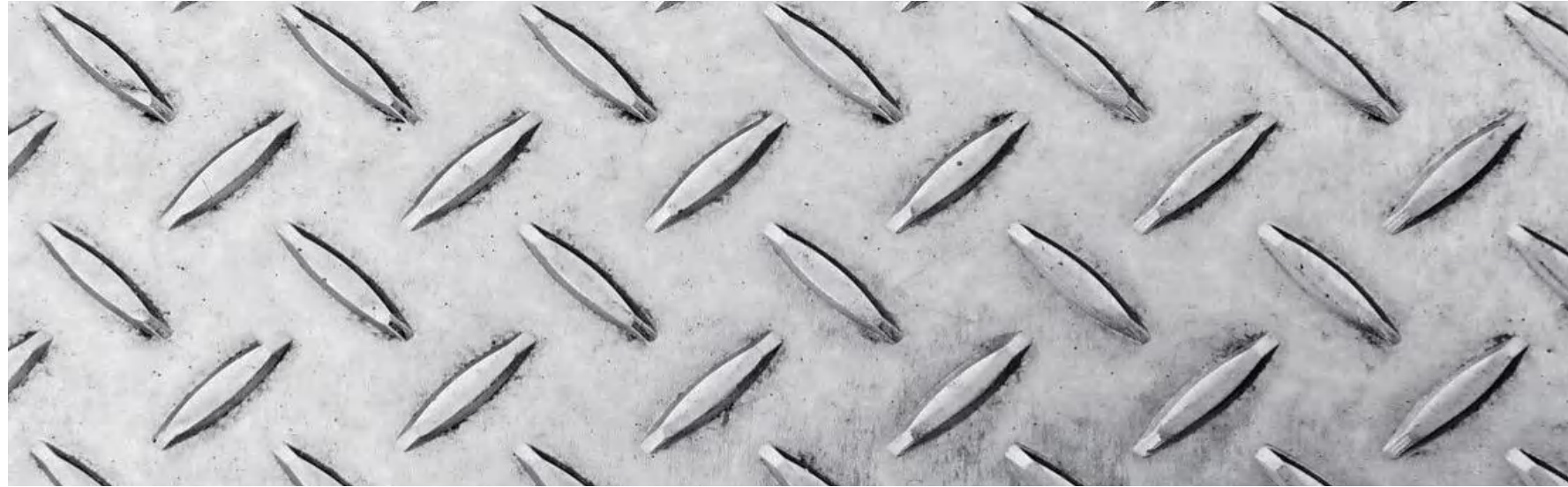
Hot rolled strip refers to the strip and plate produced by hot rolling. The general thickness is 1.2 ~ 8mm. Strip steel with width less than 600mm is called narrow band steel, and strip steel with width more than 600mm is called wide band steel.



PART 1.2 HOT ROLLED CARBON STEEL

03

04



INTRODUCE

Checkered plate is characterized by a raised angular pattern rolled onto the surface of the plate to provide skid resistance.

ADVANTAGE

There's no pocket to collect grease, dirt or liquids,so checkered plate is easy to keep clean and dry.

APPLICATION

It is widely used in transportation, architecture, decoration, bottom plate around equipment, machinery, shipbuilding and other fields.

CARBON STEEL CHECKERED PLATE

The checkered steel plate can be used as floor, plant escalator, work frame pedal, ship deck, automobile bottom plate, etc. its surface has protruding edges and anti-skid effect.



CARBON STEEL CHECKERED COIL

Checkered steel coil, also known as checkered steel coil, is a steel coil with sunflower shape or hawthorn on its surface. The pattern can be a single withered shape, lentil shape or round bean shape, or two or more patterns can be properly combined into a combined pattern plate.



CARBON STEEL PATTERN BELT

The specification of the patterned steel strip is expressed by the basic thickness (excluding the thickness of the protruding edge), and there are 10 specifications of 2.5-8mm.





INTRODUCE

Galvanized steel is defined as a carbon steel sheet coated with zinc on both sides. Zinc coating is one of the most effective and economical method of protecting bare steel from a corroding environment.

ADVANTAGE

Galvanized carbon steel plate is anti-rust. Its coating color is silver with high gloss as that of galvanized parts. And it contains zinc and has antirust ability.

APPLICATION

Galvanized steel sheet is widely used in construction, engineering vehicles and bridges, in storage containers such as boilers and gas tanks, oil rigs and many offshore equipments.

GALVANIZED CARBON STEEL PLATE

Steel plate galvanizing is a process method to improve the corrosion resistance and beautiful decoration of steel plate. At present, the most commonly used method of steel plate galvanizing is hot galvanizing. Galvanized steel plate is to prevent corrosion on the surface of steel plate and it can prolong its service life.



GALVANIZED CARBON STEEL COIL

It is mainly produced by continuous galvanizing process, that is to say, the rolled steel plate is continuously immersed in the zinc melting bath to make galvanized steel plate and alloyed galvanized steel sheet. This steel plate is also made by hot dipping.



GALVANIZED CARBON STEEL STRIP

Cold rolled coil is made of hot rolled coil and rolled below recrystallization temperature at room temperature, including plate and coil. Many domestic steel mills such as Baosteel, WISCO and Angang can produce them.





INTRODUCE

Also known as pre-coated steel or color coated steel coil, it is a product made of hot-dip galvanized steel sheet, hot-dip galvalume steel sheet, electro galvanized steel sheet, etc.

ADVANTAGE

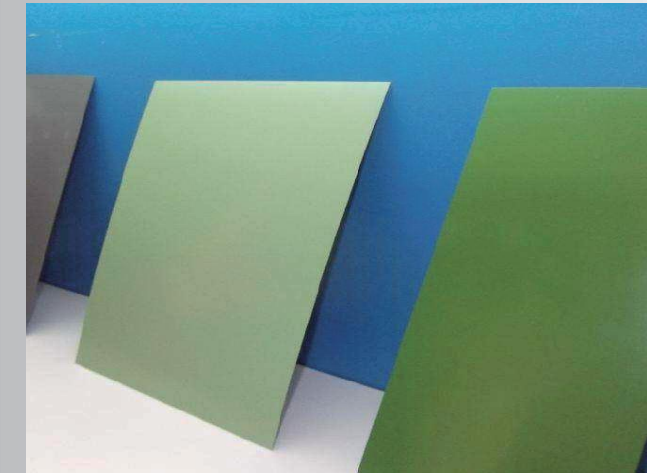
Broad Availability Color steel sheets are available in wide range of colors, sizes, and mechanical characteristics.

APPLICATION

It provides a new raw material for construction, shipbuilding, vehicle manufacturing, furniture industry, electrical industry ,etc.

COLOR COATED PLATE

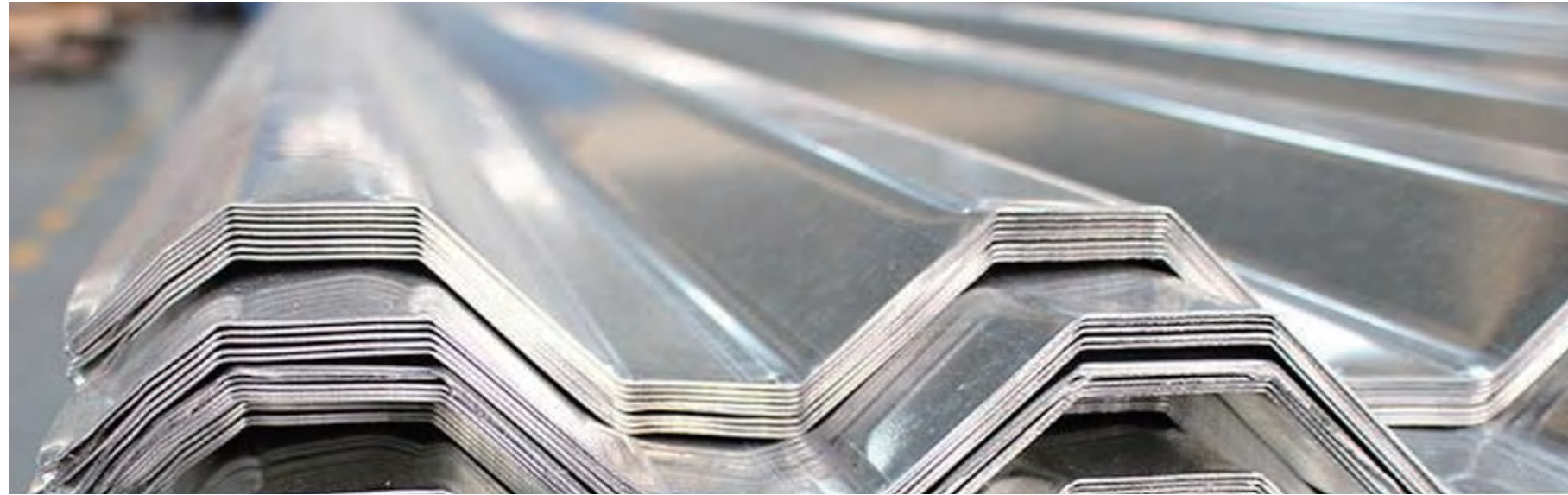
Color coated plate is the plate obtained by baking and cooling with cold rolled strip steel and galvanized strip steel (electro galvanized and hot galvanized) as the substrate, surface pretreatment (degreasing and chemical treatment) and roll coating.



COLOR COATED ROLL

Color coated coil is a product based on hot-dip galvanized sheet, hot-dip aluminum zinc sheet, electro galvanized sheet, etc. After surface pretreatment (chemical degreasing and chemical conversion treatment), one or more layers of organic coatings are coated on the surface, and then baked and cured.





INTRODUCE

Corrugated sheet is also called profiled sheet, which is made of color coated steel sheet, galvanized sheet and other metal sheets by rolling and cold bending into various wave profiled sheets.

ADVANTAGE

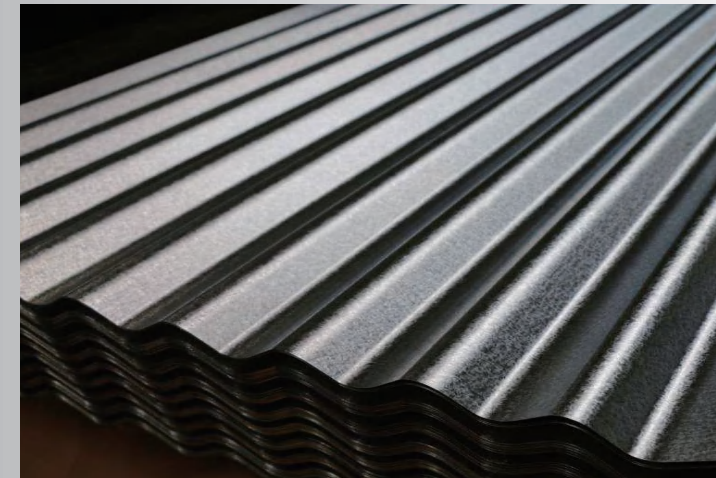
It has the characteristics of light weight, high strength, rich color, convenient construction, earthquake resistance, fire prevention, rain proof, long service life, maintenance free, etc.

APPLICATION

It is applicable to the roof, wall and internal and external wall decoration of industrial and civil buildings, warehouses, special buildings and long-span steel structure houses.

GALVANIZED CORRUGATED SHEET

Galvanization is the process of applying a protective zinc coating to steel or iron in order to prevent it from rusting. Zinc weathers at a very slow rate, so the coating generally has a long life. Zinc has a greater electro-negativity than iron and hence provides cathodic (or sacrificial) protection to the steel.



COLOR COATED CORRUGATED SHEET

Color coated sheet is based on cold rolled steel and galvanized steel, after the surface pretreatment (degreasing, cleaning, chemical conversion treatment). Then it is coated on the surface with various coating, after baking and cooling .



CARBON STEEL PIPE



INTRODUCE

ERW pipe and seamless pipe are our company's main products, sold to lots of countries all over the world. Our steel pipes can be treated with various surface treatments.

ADVANTAGE

Compared with solid steel such as round steel, carbon steel seamless steel pipe has lighter weight when its bending and torsional strength is the same, which is an economic section steel.

APPLICATION

It is widely used in manufacture structural parts and mechanical parts, such as oil drill pipe, automobile transmission shaft, bicycle frame and steel scaffold used in construction.

CARBON STEEL SEAMLESS PIPE

Carbon steel seamless pipe is a kind of long steel. Steel pipe has hollow section and is widely used as pipeline for conveying fluid, such as pipeline for conveying oil, natural gas, gas, water and some solid materials.



COLD ROLLED CARBON STEEL PIPE

Carbon steel are used extensively to make daily necessities such as automobiles,TV sets, air-conditioners, refrigerators and tools. As our lifestyles improve significantly, the daily necessities become more diverse and upmarket.



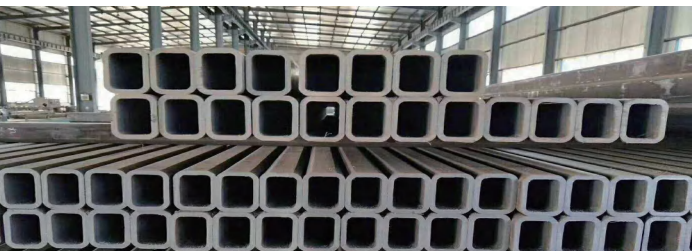
CARBON STEEL ROUND PIPE

The raw material of carbon steel round pipe is round pipe blank, and the round pipe blank needs to be cut and processed by cutting machine, and the blank with a growth of about 1m.



CARBON STEEL SQUARE PIPE

Square tube is a kind of light tube with hollow square section, also known as steel cold-formed profile. It is a section steel processed by cold bending with Q235 hot-rolled or cold strip or coil as the base material.





INTRODUCE

Carbon steel rod is an alloy rod containing carbon and iron, with a carbon content up to 2.1% by weight. Carbon steel bars have good hardness and strength properties and they are cheaper than other steels.

ADVANTAGE

Carbon steel rod is not only good, and the service time is long, which can effectively save cost and increase efficiency.

APPLICATION

The conveyor belt made of carbon steel rod is used as the traction and carrying component of belt conveyor.

CARBON STEEL SQUARE BAR

As a widely used steel, carbon steel square bar has good heat resistance, low temperature strength and mechanical properties, good hot workability such as stamping and bending.



CARBON STEEL ROUND BAR

Carbon Steel with only carbon as a specific alloying element is called carbon steel. This kind of steel is easy to form, process, weld and manufacture. It is usually used for screw mechanical parts, shafts, pins, spindles and rods.



ANISOTROPIC STEEL BAR

Rebar (short for reinforcing bar), known when massed as reinforcing steel or reinforcement steel, is a steel bar or mesh of steel wires used as a tension device in reinforced concrete and reinforced masonry structures to strengthen and aid the concrete under tension.





INTRODUCE

Steel profiles are steel products which have been rolled, drawn or pressed into a shape which is the same cross-section over its entire length.

ADVANTAGE

It has lower price, the same strength and service life as aluminum, far exceeding ordinary steel. It is very cost-effective.

APPLICATION

Carbon steel profiles can be used in the fields of doors, windows and curtain walls of various buildings, construction engineering, railway transportation, etc.

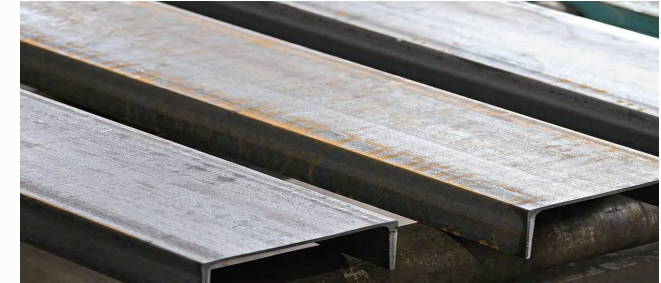
CARBON STEEL ANGLE STEEL

Steel angle, also named angle iron, or steel angle bar, is basically manufactured by hot-rolled carbon steel or high strength low alloy steel.



CARBON STEEL CHANNEL

There has been a growing use of C Sections within the building industry. Other applications include building frames, agricultural equipment and cargo trailer frame supports.



CARBON STEEL PROFILE

Carbon steel Profiles offer excellent support in load-bearing applications, particularly those requiring welding, bolting or riveting, such as construction supports in commercial and residential projects and cargo trailer manufacturing.



COLD ROLLED SHEET PILE



INTRODUCE

Steel profiles are steel products which have been rolled, drawn or pressed into a shape which is the same cross-section over its entire length.

ADVANTAGE

It has lower price, the same strength and service life as aluminum, far exceeding ordinary steel. It is very cost-effective.

APPLICATION

Carbon steel profiles can be used in the fields of doors, windows and curtain walls of various buildings, construction engineering, railway transportation, etc.

U TYPE SHEET PILES

Cold-formed sheet piles can be used in cofferdams, bank protection, deep foundation pits, land reclamation and other places. U-shaped steel sheet piles also have a large single pile moment of inertia, allowing for repeated use. These cold-formed sheet piles can meet any engineering requirement.



OMEGA TYPE SHEET PILE

Omega sheet pile has a cap - shaped section, relatively thin, but large section area. The interlocking device is located outside the L/S sheet pile, and the neutral axis of each pile is consistent with the entire sheet pile wall.



Z TYPES SHEET PILES

Z steel sheet pile is called Z pile because the single sheet pile is letter shaped. Now the maximum thickness of cold rolled Z sheet pile is 16mm. HZ composite wall, OZ sheet pile and tubular composite wall are all Z-shaped. Z sheet piles are usually double welded or double crimped, and the system width is larger than U sheet piles.

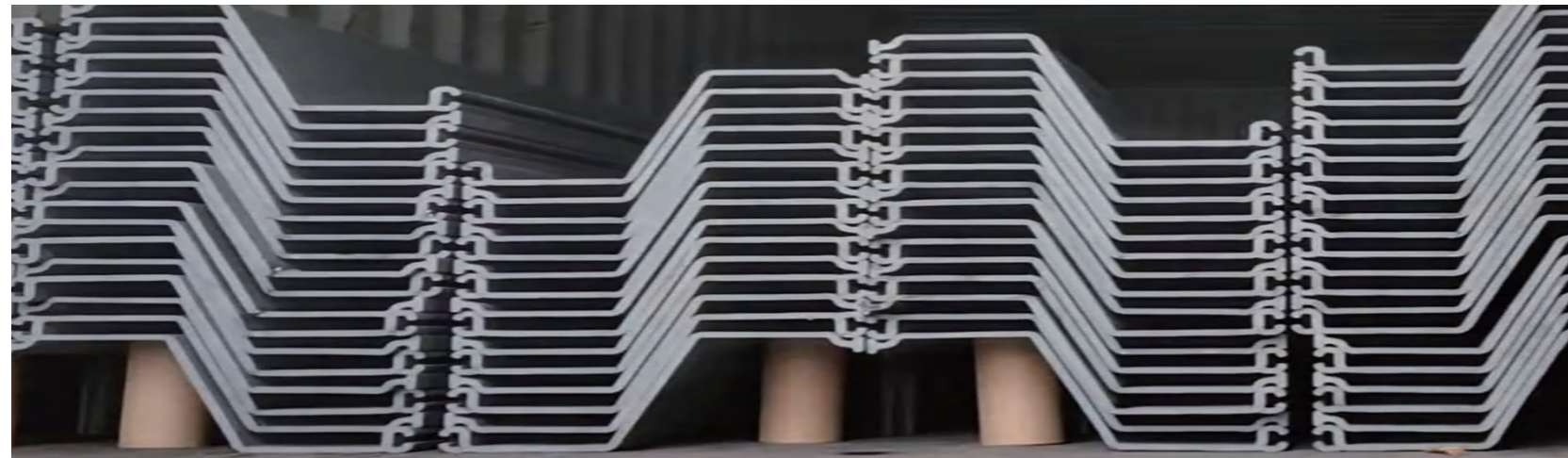


TRENCH SHEETS

Steel trough plates are available in a variety of profiles, lengths and steel types. Overlapping slot plates do not interlock. Interlocking slotted plates are connected with other sheet piles in interlocking mode. Trough sheet pile is a kind of pile with light dead weight and simple lap.



HOT ROLLED SHEET PILE



INTRODUCE

Carbon steel rod is an alloy rod containing carbon and iron, with a carbon content up to 2.1% by weight. Carbon steel bars have good hardness and strength properties and they are cheaper than other steels.

ADVANTAGE

Carbon steel rod is not only good, and the service time is long, which can effectively save cost and increase efficiency.

APPLICATION

The conveyor belt made of carbon steel rod is used as the traction and carrying component of belt conveyor.

U SECTION SHEET PILE

Hot rolled steel sheet piles are formed of molten iron. The usual finish is the grinding finish, which is to apply light scales to the small material and heavy scales to the thick material. By interlocking the ends, multiple sections form a continuous sheet pile wall, which forms a hard water and soil barrier against lateral pressure. Sheet pile wall has good bending resistance and structural strength to deep foundation.



Z SECTION SHEET PILE

Z sheet piles are produced in a Z shape, usually crimped or welded double ends. Because of its larger modulus, Z-shaped sheet piles can be used as intermediate piles for tubular and HZ composite walls, and are more widely used than U-shaped sheet piles in port construction and deep foundation.



STRAIGHT WEB SHEET PILE

Straight web pile is a typical closed cylindrical structure, widely used in cofferdam, wharf, port and other permanent and temporary projects. Straight web pile, also known as hot rolled sheet pile, designed to be cylindrical structure, generally closed, retaining soil backfill.



STAINLESS STEEL PLATE / COIL



INTRODUCE

Stainless steel plate / coil is one of the most popular raw materials in construction and manufacturing. Stainless steel plate / coil is made of hot rolled stainless steel billet in heating furnace.

ADVANTAGE

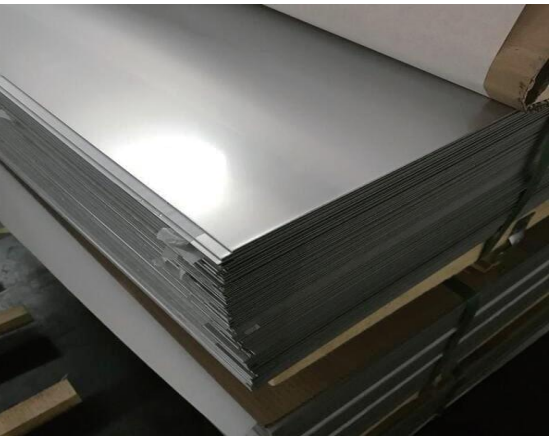
Complete specifications, various materials, high dimensional accuracy up to $\pm 0.1\text{mm}$, good surface quality, good brightness, strong corrosion resistance, high tensile strength and fatigue strength.

APPLICATION

Buses, subways, high-speed railway vehicles and other public transportation vehicles are also widely used, the household appliances industry is a potential big market for stainless steel applications.

STAINLESS STEEL PLATE

Stainless steel plate is generally stainless steel plate and acid - resistant steel plate. At the beginning of this century, the development of stainless steel plate for the development of modern industry and scientific and technological progress has laid an important material and technological foundation.



STAINLESS STEEL COIL

Stainless Steel Coils are one of the most sought after types of raw material in the construction and manufacturing industries. Stainless steel coil is manufactured by hot rolling stainless steel slabs in a reheat furnace. The hot rolling process is carried out at a certain high temperature.





INTRODUCE

Electroplating color plated stainless steel , using color electroplating technology to process the decorative layer, has excellent weather resistance, and the index is much better than the traditional process,

ADVANTAGE

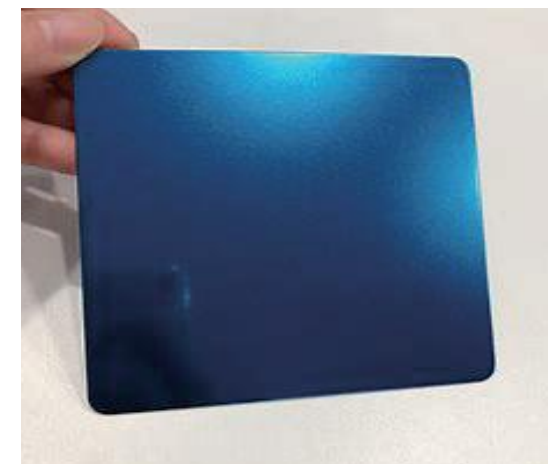
The processed products are cheaper, suitable for mass production, and they are not limited by the volume of stainless steel. And Processed product lines natural, three-dimensional strong sense.

APPLICATION

The application of color plated stainless steel is very wide, such as house decoration, car interior or according to the customer's drawings and requirements.

COLOR PLATED STAINLESS STEEL

With the improvement of people's living standards and aesthetic standards, the traditional process of stainless steel has been unable to meet the needs of the people's life. Color stainless steel plating, arises at the historic moment.



COLOR PLATED STAINLESS STEEL

As a professional manufacturer of steel, we have mastered the new material surface treatment technology. According to customer's requirements, we can custom design rich, excellent quality of color plated stainless steel products.



PART 3.2

COLOR PLATED STAINLESS STEEL

25

26



INTRODUCE

Stainless steel Embossed plate is made from high grade stainless steel, it is a metal sheet whose surface has a convex pattern on one side, so it has the good anti-skid feature.

ADVANTAGE

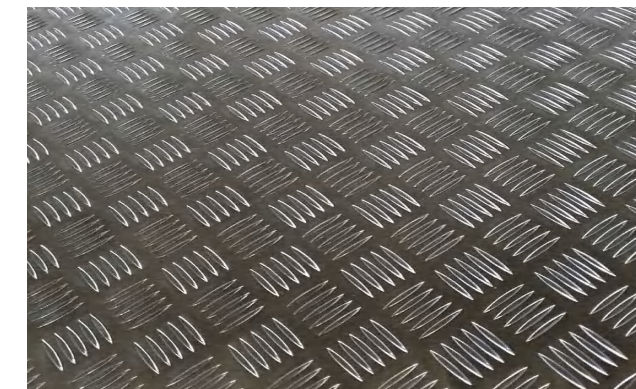
High temperature resistance, corrosion resistance, alkaline resistance, anti-rust, anti-skid, durable and long life, minimum maintenance.

APPLICATION

Due to the characteristic of anti-skid, it can be used in the non-slip floor, automobile stairs, engineering stairs, industrial flooring, etc.

STAINLESS STEEL EMBOSSED PLATE

The high grade stainless steel, making it owing the highly corrosion resistance. It can offer the excellent modern design feeling and excellent physical and chemical properties.

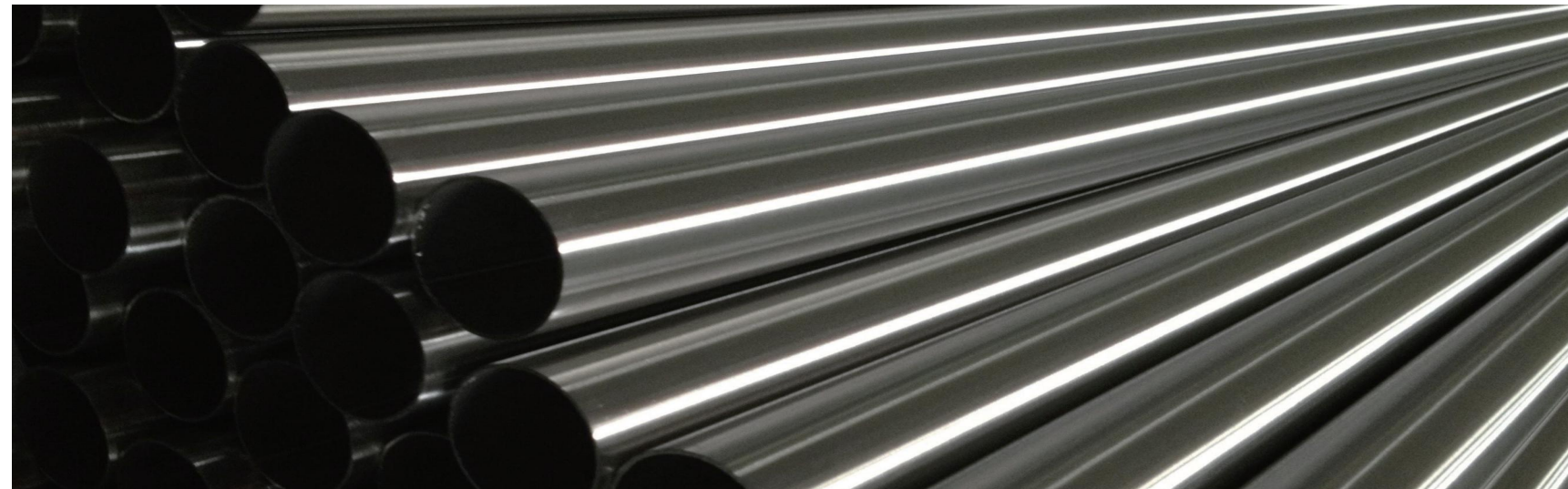


STAINLESS STEEL EMBOSSED PLATE

The embossing process is carried out on the stainless steel plate by mechanical equipment, so that the concave convex pattern appears on the plate surface. In the early 1960s, small batch production was started by large rolling mills in Europe.



STAINLESS STEEL PIPE



INTRODUCE

Stainless steel pipe is a kind of hollow long round steel. In addition, when the bending and torsional strength are the same, the weight is light.

ADVANTAGE

Stainless steel pipe has high pressure resistance, good toughness, and high surface brightness (the surface brightness of the steel pipe determined by the surface grade of the steel plate).

APPLICATION

It is widely used in industrial transmission pipelines and mechanical structural parts such as petroleum, chemical industry, medical treatment, food, light industry, machinery and instruments.

STAINLESS SEAMLESS STEEL PIPE

Stainless seamless steel pipe is a kind of hollow section, no joints around the strip steel. It is resistant to air, steam, water and other weak corrosive medium and acid, alkali, salt and other chemical corrosive medium corrosion.



STAINLESS STEEL ROUND PIPE

Stainless steel round pipe is a kind of hollow long round steel, which is widely used in petroleum, chemical industry, medical treatment, food, light industry, mechanical structural parts and so on.



STAINLESS STEEL WELDED PIPE

Stainless steel welded pipe is also called welded steel pipe. It is made of stainless steel plate or stainless steel belt through the unit and mold crimping molding, welding.



STAINLESS STEEL SQUARE PIPE

Stainless steel square pipe is a kind of hollow long steel. Because the section is square, it is called square tube. A large number of pipes are used to transport fluids.





INTRODUCE

According to the production process, stainless steel bars can be divided into hot rolling, forging and cold drawing. The specification of hot rolled stainless steel round steel is 5.5-250mm.

ADVANTAGE

High corrosion resistance makes it suitable for use in harsh environments. It is resistant to fire and heat and resists scaling and maintains strength at high temperatures.

APPLICATION

Widely used in hardware kitchenware, shipbuilding, petrochemical, machinery, medicine, energy, building decoration, nuclear power, aerospace, military and other industries.

STAINLESS STEEL ROUND BAR

According to the processing methods, stainless steel bars are divided into: pressure processing steel and cutting processing steel. According to the structural characteristics, it can be divided into austenite type, austenite ferrite type, ferrite type, martensite type and precipitation hardening type.



STAINLESS STEEL SQUARE BAR

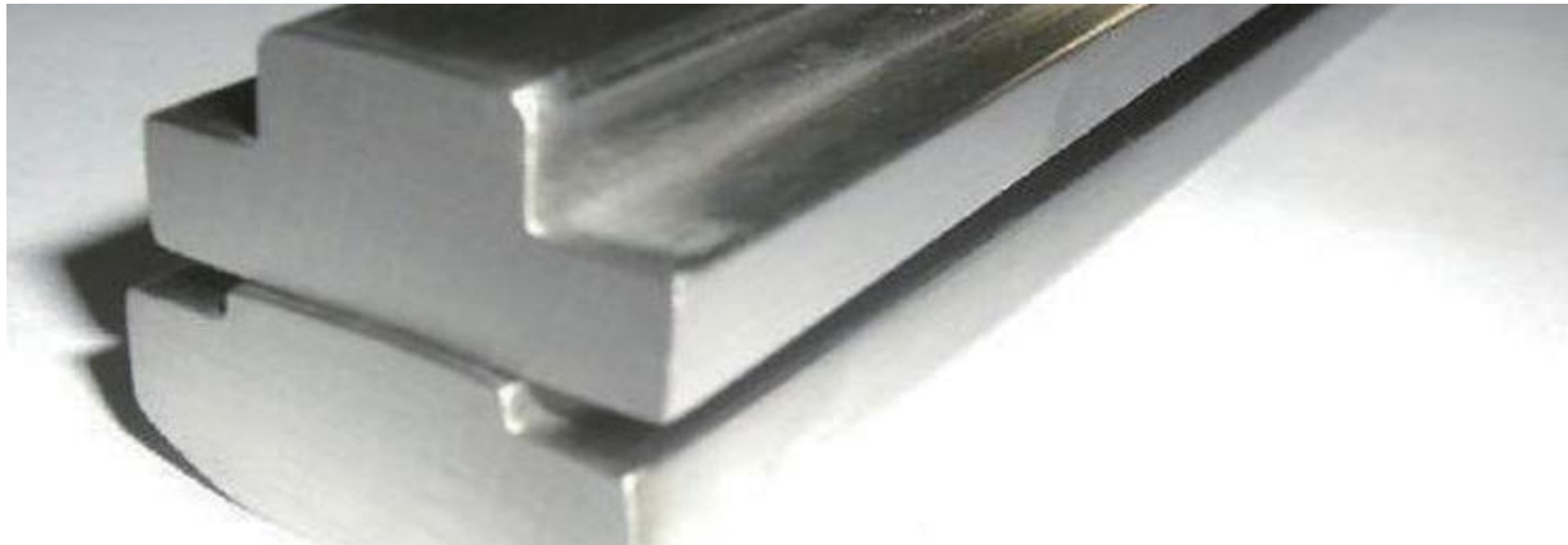
Stainless steel square bar is a universal stainless steel material, and its rust resistance is stronger than that of 200 series stainless steel. High temperature resistance is also relatively good. Generally, the service temperature limit is less than 650 ℃.



STAINLESS STEEL PROFILED BAR

Hexagonal bar is a long strip of solid stainless steel with hexagonal section. Due to the characteristics of stainless steel hexagonal bar, it is widely used in marine, chemical industry, construction, etc.





INTRODUCE

Stainless steel profiles are used in engineering construction. Based on the good corrosion resistance of stainless steel, it can permanently maintain the integrity of engineering design.

ADVANTAGE

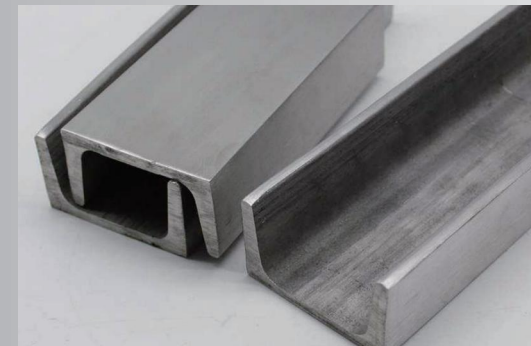
High strength and stable quality of steel plate, high temperature oxidation resistance and high strength, beautiful surface and diversified use possibilities.

APPLICATION

It is mainly used for industrial production and manufacturing, such as automatic mechanical equipment, enclosure framework and customized by companies according to their own requirements.

STAINLESS STEEL ANGLE STEEL

Angle steel which belongs to the construction of carbon structural steel, is a simple section of steel steel, and it is mainly used for metal components and workshop frame. Good weldability, plastic deformation and mechanical strength are required in use.



STAINLESS STEEL PROFILE

The chemical composition of stainless steel I-beam belongs to the rolled steel series for general structure, and the main inspection indexes are C, Mn, P and s. The content varies according to different brands, and the approximate range is C < 0.08%, Mn: 2.0, P < 0.035%, s < 0.03%.

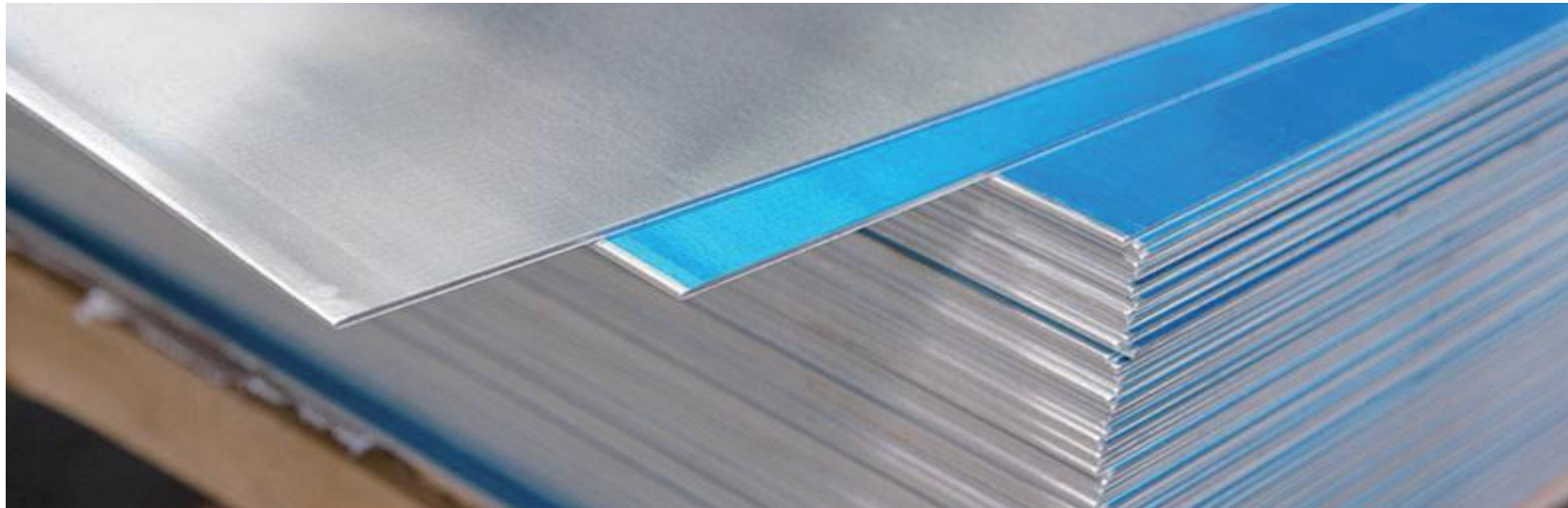


STAINLESS STEEL CHANNEL

Channel steel is the section of the groove shaped strip steel, belongs to the construction and mechanical use of carbon structural steel, is a complex section of steel steel, its section shape is groove. Channel steel is mainly used in building structure, curtain wall engineering, mechanical equipment and vehicle manufacturing.



ALUMINUM PLATE / COIL / STRIP



INTRODUCE

Aluminum plate is made of aluminum and other alloy elements. Usually, it is first processed into plates and profiles, and then made through cold bending, sawing, drilling, assembly, coloring and other processes.

ADVANTAGE

It has strong wear resistance, weather resistance and corrosion resistance. It can form a variety of colors on the surface of the substrate with strong hardness.

APPLICATION

Automatic mechanical equipment, shell framework, assembly line conveyor belt, elevator, distributor and inspection, equipment and shelf, electronic machinery industry and dust-free room, etc.

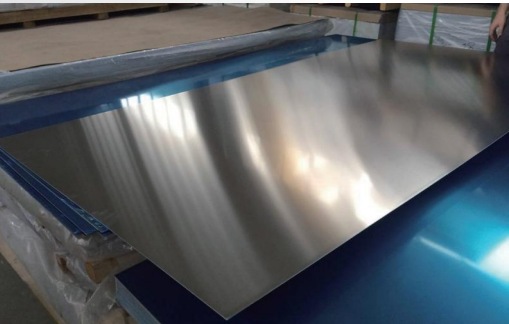
ALUMINUM PLATE

Aluminum plate refers to the rectangular plate rolled from aluminum ingot, which is divided into pure aluminum plate, alloy aluminum plate, thin aluminum plate, medium thickness aluminum plate and pattern aluminum plate.



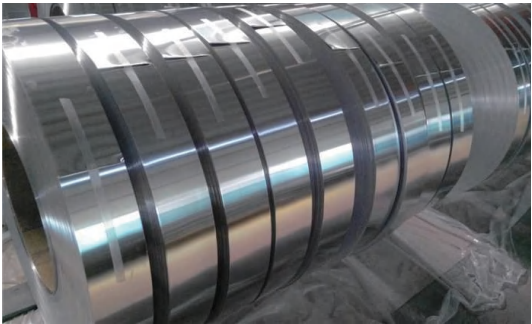
ALUMINUM COIL

Aluminum coil is a metal product for flying shear after calendering, drawing and bending. Aluminum coil is widely used in electronics, packaging, construction, machinery and other aspects. There are many aluminum coil production enterprises in China, and the production process has caught up with that of developed countries.



ALUMINUM STRIP

The raw materials of aluminum strip are pure aluminum or aluminum alloy cast rolled aluminum coil and hot rolled aluminum coil, which are rolled into thin aluminum coil with different thickness and width by cold rolling mill, and then longitudinally cut into aluminum strip with different width by longitudinal shear according to the purpose.





INTRODUCE

Aluminium embossed sheet is a kind of aluminum product which form a variety of decorative patterns on the surface after rolling process on the basis of the aluminum sheet.

ADVANTAGE

It has light material weight and good process performance. It can be painted with a variety of colors. Advanced electrostatic spraying technology is used to color the products.

APPLICATION

It has obvious below advantages such as acid-corrosion-resistance, long-lasting shine, beautiful patterns, strong adhesion, impact resistance, non-toxic side effects, safety and environmental protection.

PATTERNED ALUMINUM PLATE

Embossed aluminum sheet, after the process of embossing, cutting, oxidation will form the surface with a dense layer of aluminum oxide protective film.



PATTERNED ALUMINUM PLATE

With above characteristics, the embossed surface is clean and shiny. Besides, the electro-oxidation can effectively remove residual oil and manual handling of fingerprints.





INTRODUCE

Color coated aluminum sheets & coils are the surface coating of aluminum plate coloring treatment, the common fluorocarbon color-coated aluminum, polyester color-coated aluminum.

ADVANTAGE

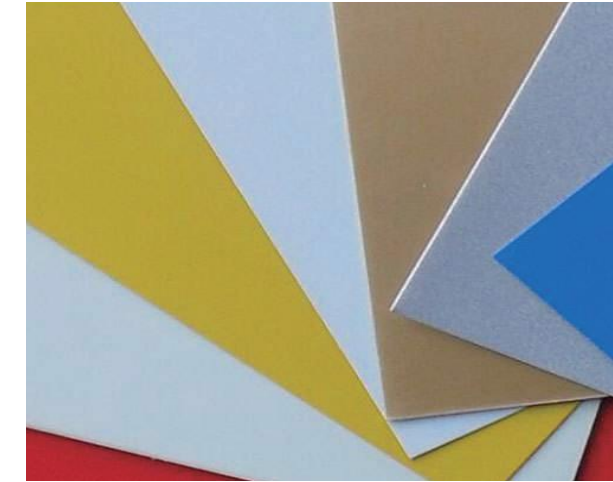
Its performance is very stable, not easy to be corroded, unit volume of weight is the lightest metal material, color coated aluminum is the most popular new material.

APPLICATION

Widely used in aluminum plastic plates, aluminum veneer, aluminum honeycomb panels, aluminum ceiling, roof, edges and corners, easy-to-open cans, electronic products.

COLOR COATED ALUMINUM PLATE

Color coated aluminum sheets are processed from the highest quality aluminum, mill direct, on one of computerized cut-to-length lines.



COLOR COATED ALUMINUM COIL

Good plasticity and machinability make it an ideal material for a variety of architectural shapes. Color-coated aluminum coils have provided architects, designers and owners with a personalized color space for exterior walls and ceilings, as well as the ideal material for architectural styling.





INTRODUCE

Aluminum profile refers to aluminum alloy profile. It is first processed into castings, forgings, plates, strips and profiles, and then made through cold bending, sawing, coloring and other processes.

ADVANTAGE

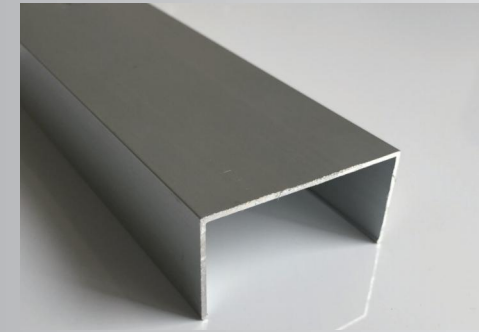
Aluminum can show excellent corrosion resistance. The conductivity of aluminum is nearly twice that of copper. Aluminum profile is non-ferromagnetic and it has excellent machinability.

APPLICATION

Widely used in hardware kitchenware, shipbuilding, petrochemical, machinery, medicine, energy, building decoration, nuclear power, aerospace, military and other industries.

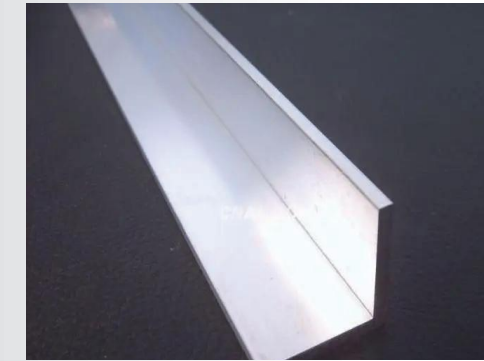
ALUMINUM ANGLE STEEL

Aluminum angle steel, commonly known as angle aluminum, is a long strip of aluminum with both sides perpendicular to each other. It can be divided into equal angle aluminum and unequal angle aluminum.



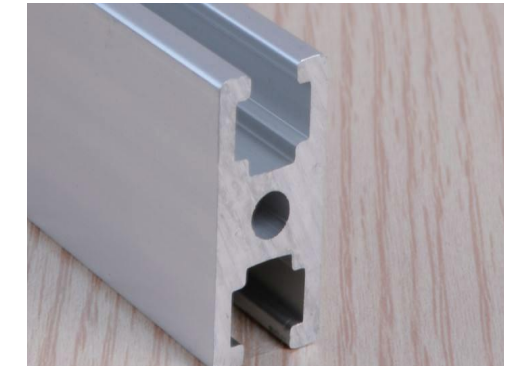
ALUMINUM C-CHANNEL

Aluminum C-channel is perfect for store fixtures, displays, shower enclosures, windows, glass/mirror projects, chairs, elevators, framing and more.

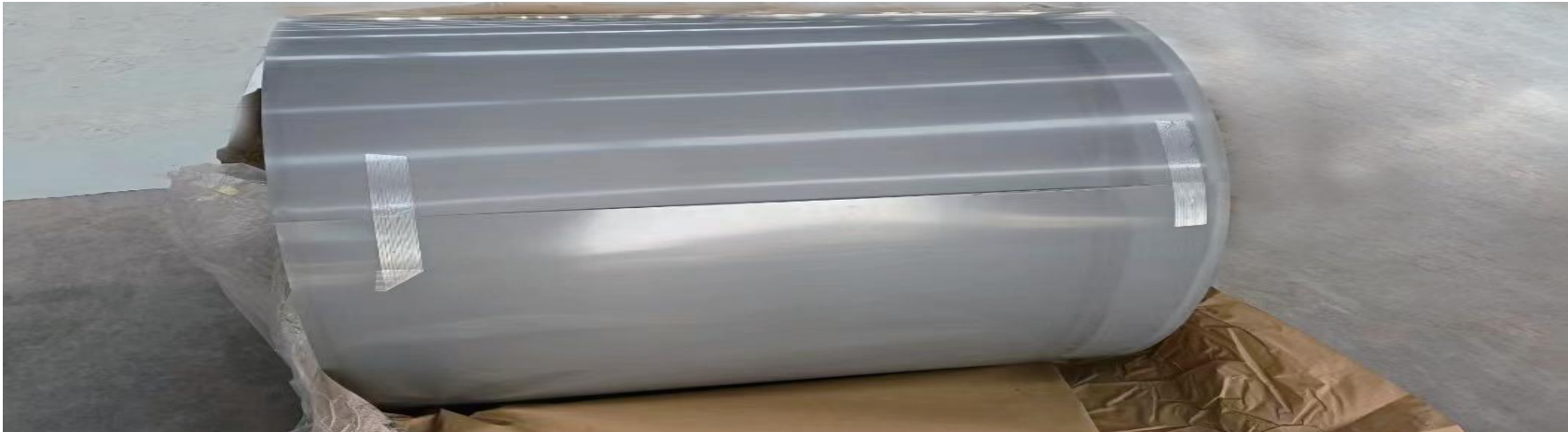


ALUMINUM PROFILE

Industrial aluminum profile is a material obtained by taking aluminum as the main alloy element and adding other alloy elements through heating, extrusion, surface treatment and other processes.



COLD ROLLED NON-GRAIN ORIENTED STEEL SHEET



INTRODUCE

Silicon alloy steel with silicon content of 1.0 ~ 4.5% and carbon content of less than 0.08% is called silicon steel. It has the characteristics of high permeability, low coercivity and high resistivity, so the hysteresis loss and eddy current loss are small.

ADVANTAGE

Low loss of silicon steel can save a lot of power, prolong the motor and transformer operation time and simplify the cooling system. Silicon steel magnetic sensitivity is high, the core of the magnetic current is reduced, but also save energy.

APPLICATION

It is mainly used as magnetic material in motors, transformers, electrical appliances and electrical instruments. In order to meet the needs of punching and shearing processing in the manufacture of electrical appliances, it also requires a certain degree of plasticity.

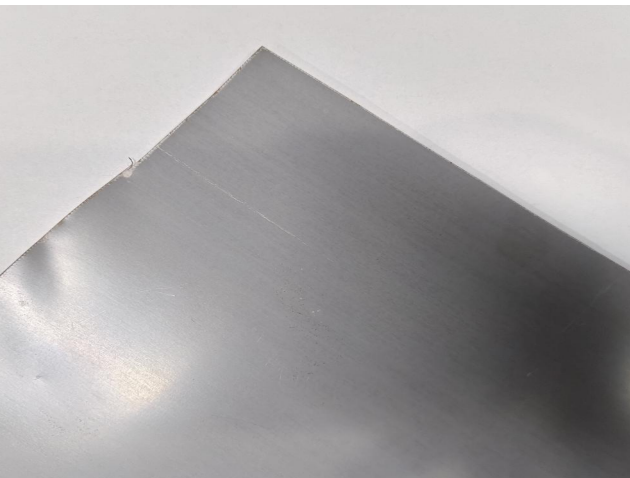
NON-ORIENTED ELECTRICAL STEEL

An alloy of ferrosilicon with low silicon content. In deformed and annealed steel plates, the grains are randomly distributed. The alloy has a silicon content of 1.5% to 3.0%, or a combined silicon and aluminum content of 1.8% to 4.0%. The product is usually cold rolled sheet or strip, mainly used in the manufacture of electric motors and generators.



DIRECTIONAL ELECTRICAL STEEL

In a certain magnetization field, strong directivity, rolling direction of the lowest iron loss, the highest permeability, magnetic induction value is high. Oriented silicon steel has a silicon content of about 3%. It also requires that the content of oxide inclusions in the steel be low and must contain certain inhibitors (MnS, AlN).



AGRICULTURAL GUARDRAIL, INDUSTRIAL GUARDRAIL

Our company has advanced spraying assembly line and welding equipment, specializing in anti-collision guardrail, bridge guardrail, landscape, lighting, river isolation guardrail, stainless steel guardrail, stainless steel carbon steel composite pipe guardrail and all kinds of protection class guardrail production, complete specifications,support customized products you need.



PHYSICAL DISPLAY

